

DOCTORAL THESIS

Compromised anti-tumor-immune features of myeloid cell components in chronic myeloid leukemia patients

(慢性骨髄性白血病患者の骨髄系細胞は抗腫瘍免疫能が損なわれた特徴を持つ)

March, 2022

(2022 年 3 月)

Ibuki Harada

原田 生起

Department of Immunology

Yokohama City University Graduate School of Medicine

横浜市立大学 大学院医学研究科 医科学専攻 免疫学

(**Doctoral Supervisor : Tomohiko Tamura, Professor**)

(**指導教員:田村 智彦 教授**)



OPEN

Compromised anti-tumor–immune features of myeloid cell components in chronic myeloid leukemia patients

Ibuki Harada¹, Haruka Sasaki¹, Koichi Murakami², Akira Nishiyama¹, Jun Nakabayashi^{2,8}, Motohide Ichino¹, Takuya Miyazaki³, Ken Kumagai⁴, Kenji Matsumoto³, Maki Hagihara³, Wataru Kawase¹, Takayoshi Tachibana⁵, Masatsugu Tanaka⁵, Tomoyuki Saito^{4,9}, Heiwa Kanamori⁵, Hiroyuki Fujita⁶, Shin Fujisawa⁷, Hideaki Nakajima³ & Tomohiko Tamura^{1,2}✉

Chronic myeloid leukemia (CML) is a form of myeloproliferative neoplasm caused by the oncogenic tyrosine kinase BCR-ABL. Although tyrosine kinase inhibitors have dramatically improved the prognosis of patients with CML, several problems such as resistance and recurrence still exist. Immunological control may contribute to solving these problems, and it is important to understand why CML patients fail to spontaneously develop anti-tumor immunity. Here, we show that differentiation of conventional dendritic cells (cDCs), which are vital for anti-tumor immunity, is restricted from an early stage of hematopoiesis in CML. In addition, we found that monocytes and basophils, which are increased in CML patients, express high levels of PD-L1, an immune checkpoint molecule that inhibits T cell responses. Moreover, RNA-sequencing analysis revealed that basophils express genes related to poor prognosis in CML. Our data suggest that BCR-ABL not only disrupts the “accelerator” (i.e., cDCs) but also applies the “brake” (i.e., monocytes and basophils) of anti-tumor immunity, compromising the defense against CML cells.

Chronic myeloid leukemia (CML) is a myeloproliferative neoplasm associated with the *BCR-ABL1* fusion oncogenes generated upon t(9;22) chromosomal translocations in hematopoietic stem cells (HSCs)¹. *BCR-ABL1* encodes a constitutively active BCR-ABL tyrosine kinase. This dysregulated tyrosine kinase transforms the cells and leads to enhanced proliferation and genomic instability of CML cells, along with suppressed apoptosis. CML is known to progress through three phases: chronic phase (CML-CP), accelerated phase (CML-AP), and blast crisis (CML-BC). CML-CP typically lasts 3 to 5 years, and as additional genetic lesions accumulate, the disease eventually progresses to CML-AP, and CML-BC with an extremely poor prognosis². The development of tyrosine kinase inhibitors (TKIs) has dramatically improved the prognosis of CML. Currently, the life expectancy of a newly diagnosed patient with CML-CP is close to normal. However, several issues remain, such as intolerance or a decreased quality of life due to early and late toxicity of TKIs, development of resistant mutations to TKIs, and increased financial burden^{3,4}. Therefore, to find clues to solve the problems, deeper understanding of CML pathogenesis is needed.

The immune system plays critical roles in tumor pathogenesis⁵. Recently, rapid clinical progress of cancer immunotherapy with chimeric antigen receptor-modified T cells, or immune modulation using antibodies targeting the programmed death 1 (PD-1)–programmed death-ligand 1 (PD-L1) pathway, has underscored

¹Department of Immunology, Yokohama City University Graduate School of Medicine, 3-9 Fukuura, Kanazawa-ku, Yokohama 236-0004, Japan. ²Advanced Medical Research Center, Yokohama City University, Kanagawa, Japan. ³Department of Stem Cell and Immune Regulation, Yokohama City University Graduate School of Medicine, Kanagawa, Japan. ⁴Department of Orthopaedic Surgery, Yokohama City University School of Medicine, Kanagawa, Japan. ⁵Department of Hematology, Kanagawa Cancer Center, Kanagawa, Japan. ⁶Department of Hematology, Saiseikai Yokohama Nanbu Hospital, Kanagawa, Japan. ⁷Department of Hematology, Yokohama City University Medical Center, Kanagawa, Japan. ⁸Present address: College of Liberal Arts and Sciences, Mathematics, Tokyo Medical and Dental University, Tokyo, Japan. ⁹Present address: Yokohama Brain and Spine Center, Kanagawa, Japan. ✉email: tamurat@yokohama-cu.ac.jp

	Sample, n	Age, median (range), years	Sex, Male, n	Sex, Female, n	WBC, median (range), cell counts/uL
(a)					
CML patients	18	56 (23–86)	12	6	48,550 (16,500–181,000)
Healthy Ctrl	6	48 (34–57)	6	0	5,200 (3,290–8,740)
(b)					
CML patients	12	56 (23–86)	8	4	
Normal Ctrl	4	78 (60–84)	2	2	

Table 1. Patient characteristics: (a) Patients and control individuals for peripheral white blood cell (WBC) analysis, (b) Patients and control individuals for bone marrow cells analysis. *n* numbers, *y* years-old.

the importance of anti-tumor immunity in cancer therapy^{6–8}. As for CML, the immune system has long been implicated in controlling CML, as evidenced by the effects of graft-versus-leukemia response–based therapies such as allogeneic hematopoietic stem cell transplantation, donor lymphocyte infusion, and interferon alpha (IFN α)^{9–12}. Thus, immunological control may be an attractive option to completely cure CML. However, CML patients do not spontaneously develop effective anti-tumor immunity^{13,14}. The bone marrow (BM) of patients with CML have an immunosuppressive tumor microenvironment¹⁵. Both CD4⁺ and CD8⁺ T cells in CML BM express high levels of putative exhaustion markers such as PD-1, T cell immunoglobulin mucin-3 (TIM3), and cytotoxic T lymphocyte associated antigen 4 (CTLA-4)¹⁵. The expansion of myeloid-derived suppressor cells (MDSCs) and regulatory T cells (Tregs) in both the BM and peripheral blood (PB), as well as, cytokine-mediated downregulation of MHC-II in CML progenitor cells, also facilitate evasion of host immune surveillance^{13,16}. In addition, CML patients have defects in generating dendritic cells (DCs)^{17,18}. Among conventional DCs, classically called myeloid DCs, type 1 cDCs (cDC1s) are potent antigen-presenting cells that play a pivotal role in inducing cytotoxic T lymphocyte (CTL) responses^{19–21}. In CML patients, a marked reduction in the number of cDC1s is observed at diagnosis¹⁸. Although we previously reported that BCR-ABL strongly inhibits cDC development from an early stage of haematopoiesis in a mouse CML model²², the effects on differentiation and function of myeloid cells, including cDC1s, in CML patients remains unclear.

In this study, we analyzed BM progenitor cells in newly diagnosed CML patients and revealed that cDC differentiation is perturbed from an early progenitor stage of myelopoiesis due to downregulated interferon regulatory factor-8 (IRF8), a transcription factor essential for the development of cDC1s^{19,23}. In addition, RNA-sequencing (RNA-seq) analysis of multiple myeloid cell fractions indicated that CML neutrophils harbor immunosuppressive features, such as enhanced expression of reactive oxygen species (ROS)-related genes. Moreover, monocytes and basophils, which are significantly increased in CML patients, were found to express high levels of PD-L1, suggesting that these cells may suppress anti-tumor immunity. Taken together, our data suggest that BCR-ABL may impair anti-tumor immunity against CML cells by disrupting cDC development and promoting myeloid cell-mediated immune suppression.

Results

cDC differentiation is perturbed from an early stage of haematopoiesis in CML. To investigate how myeloid cell differentiation is changed in CML, we first analyzed PB samples from 18 newly diagnosed CML patients. Samples from 6 healthy volunteers served as controls. The characteristics of the patients and healthy volunteers recruited in this study are shown in Table 1.

Flow cytometry analysis showed that both the percentages and absolute numbers of neutrophils and basophils were significantly increased in patients with CML (Fig. 1 and Supplementary Fig. S1a). In contrast, the percentages of monocytes, B cells, and T cells were decreased from half to a third of those in healthy volunteers, although their absolute numbers were increased. Notably, a severe reduction in the percentages of both cDC1s and cDC2s was observed in CML patients. These data were consistent with previous reports^{17,18}.

We previously demonstrated that BCR-ABL potentially inhibits differentiation of cDCs from an early stage of haematopoiesis by downregulating *IRF8* in a mouse CML model²². Therefore, we assumed that the dramatic decrease in the percentages of cDCs in human CML was also due to perturbed differentiation of myeloid cells. All myeloid cells, except for some tissue-resident macrophages and mast cells, are thought to be derived from BM HSCs (Fig. 2a)^{24,25}. In humans, HSCs give rise to common myeloid progenitors (CMPs), which produce granulocyte-monocyte progenitors (GMPs), granulocyte-monocyte–DC progenitors (GMDPs), and megakaryocyte-erythroid progenitors (MEPs)^{25,26}. GMPs and GMDPs differentiate into granulocytes, such as neutrophils, eosinophils, basophils, or mononuclear phagocytes, such as monocytes and DCs, although these pathways are still controversial. cDCs are generated from GMPs via monocyte-dendritic cell progenitors (MDPs) and common dendritic cell progenitors (CDPs), while monocytes are developed from both GMPs and MDPs^{23,26,27}. Therefore, we analyzed the composition of hematopoietic progenitor populations in the BM of newly diagnosed CML patients (Fig. 2b and Supplementary Fig. S1b). For normal controls, BM aspiration samples from orthopedic patients with no hematological disorders were collected during surgical procedures (Table 1). The percentages of total CD34⁺ cells and CMPs in CML patients were comparable to those in normal controls. However, the percentages of GMPs and MDPs, and to a greater extent, CDPs, were severely reduced in patients with CML. In contrast, the percentage of MEPs was increased in CML patients. Overall, these results indicate that cDC-lineage development is disrupted from an early stage of myeloid cell differentiation in CML.

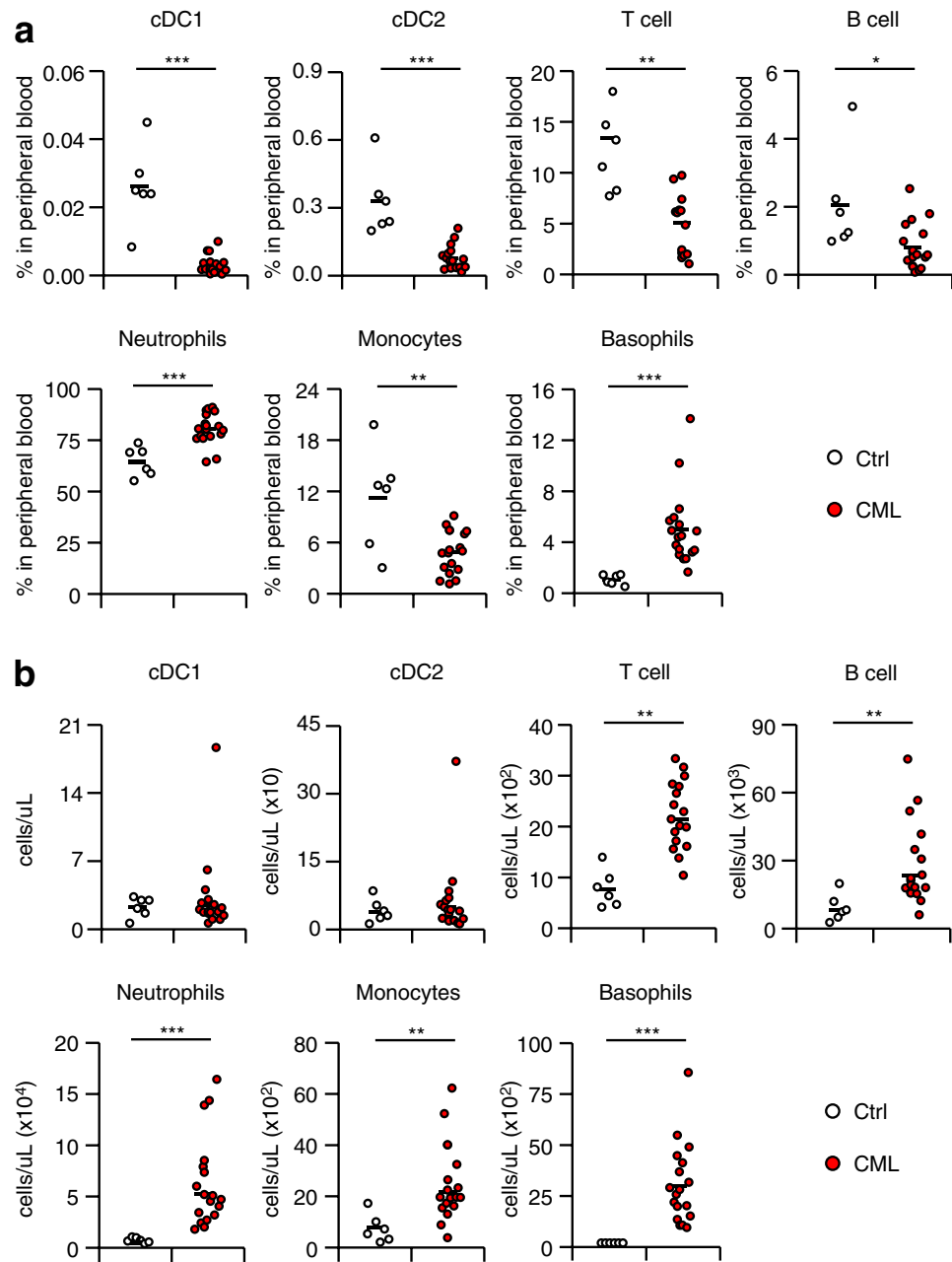


Figure 1. Proportion and absolute number of immune cells in CML patients. **(a)** Proportion of peripheral blood immune cells in CML patients (Healthy controls [Ctrl], $n = 6$; CML patients [CML], $n = 18$). **(b)** Absolute number of peripheral blood immune cells in CML patients (Healthy controls [Ctrl], $n = 6$; CML patients [CML], $n = 18$). The horizontal lines indicate mean values. * $P < 0.05$, ** $P < 0.01$, *** $P < 0.001$ (Student's t -test).

IRF8 expression is downregulated in CML HSPCs. cDC development is impaired in CML in both mice and humans^{17,18,22}. We speculated that a common mechanism may exist between these two species. Previously, we obtained transcriptomic data from mouse BM hematopoietic stem and progenitor cells (HSPC) transduced with a BCR-ABL retrovirus for 3 days in the presence of the DC-inducing cytokine FMS-like tyrosine kinase 3 ligand (FLT3L)²². We compared these data with publicly available data from BM CD34⁺ cells from CML patients²⁸. By focusing on genes downregulated by BCR-ABL or in CML patients compared to mock-transduced cells or healthy controls, we found three common genes: *DNTT*, *IRF8*, and *FLT3* (Fig. 3a). We then analyzed expression of these genes during normal mouse DC development using our previously published microarray data (Fig. 3b). We found that expression of *Irf8* and *Flt3* gradually increased as the cells differentiated from GMPs to cDC1s. In contrast, *DNTT* was barely expressed during DC development. The same trend was observed in human DC progenitors, with the highest expression of *IRF8* in CDPs (Supplementary Fig. S2a,b).

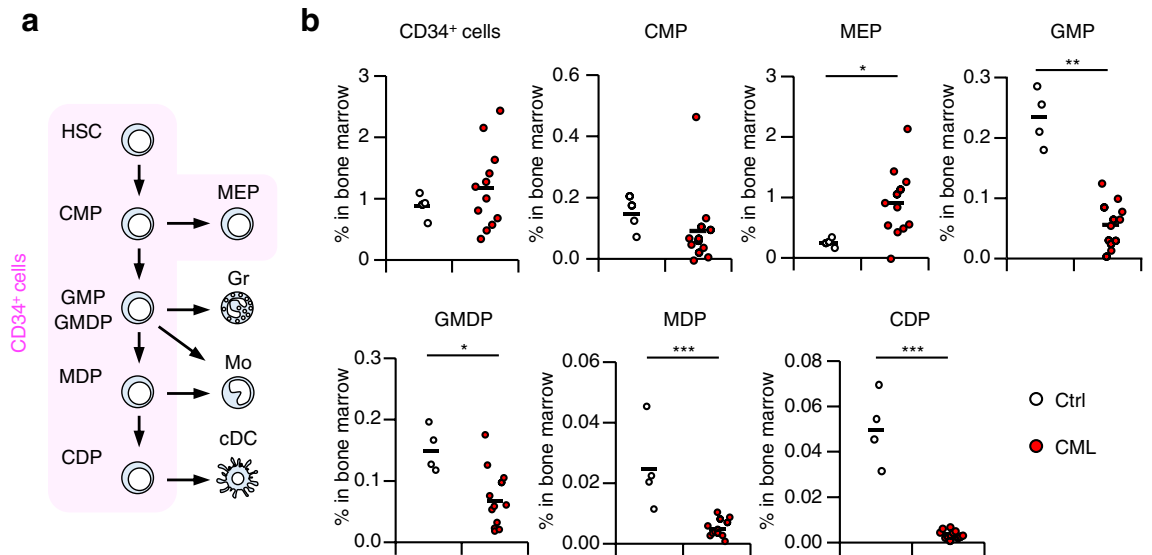


Figure 2. Proportion of myeloid progenitors in CML patients. **(a)** Schematic diagram of myeloid cell development. *HSC* hematopoietic stem cells, *CMP* common myeloid progenitors, *MEP* megakaryocyte erythroid progenitors, *GMP* granulocyte monocyte progenitors, *GMDP* granulocyte monocyte DC progenitors, *MDP* monocyte DC progenitors, *CDP* common dendritic cell progenitors; *Gr* granulocytes, *Mo* monocytes; *cDC* conventional dendritic cells including *cDC1* and *cDC2*. **(b)** Proportion of bone marrow myeloid progenitors in CML patients (Normal controls [Ctrl], n = 4; CML patients [CML], n = 12). The horizontal lines indicate mean values. **P* < 0.05, ***P* < 0.01, ****P* < 0.001 (Student's *t*-test).

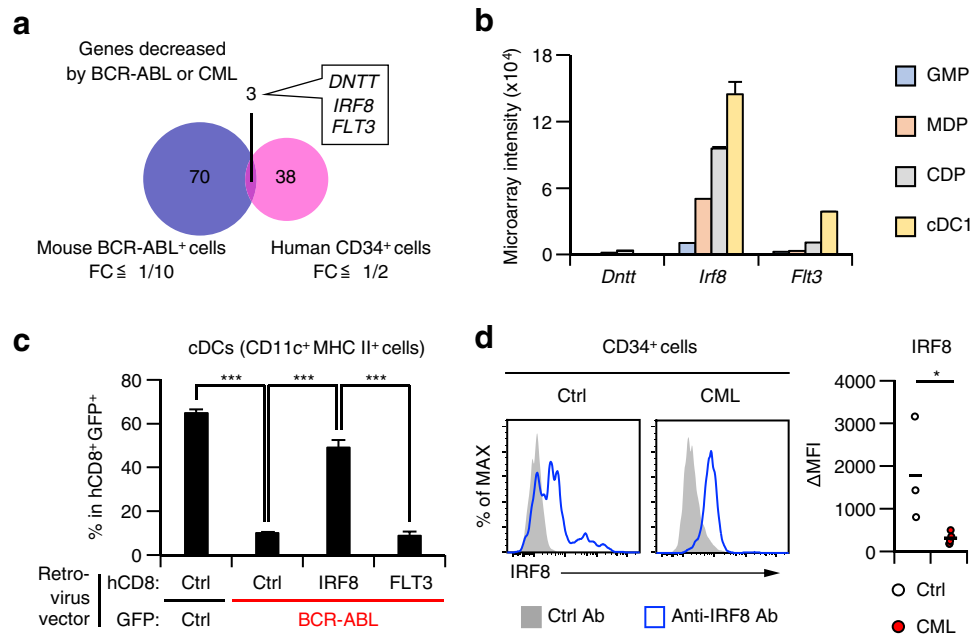


Figure 3. IRF8 expression in progenitors of CML patients. **(a)** A Venn diagram showing the overlap of genes downregulated in mouse bone marrow Lin⁻ cells transduced with BCR-ABL in vitro for 3 days and in CD34⁺ cells of CML patients. FC, fold change. **(b)** Normalized microarray intensities of *Dntt*, *Irf8*, and *Flt3* in mouse DC lineage progenitors. **(c)** Proportion of cDCs in in vitro mouse DC culture co-transduced with BCR-ABL and IRF8 or FLT3 (n = 6). **(d)** IRF8 protein expression in human CD34⁺ cells (Normal controls [Ctrl], n = 3; CML patients [CML], n = 4). Data were retrieved from GSE5550 **(a)**, GSE44920 **(a)**, and GSE84509 **(b)** and analysed. Values in **(b)** and **(d)** are the mean ± SD. The horizontal lines in **(d)** indicate mean values. **P* < 0.05, ***P* < 0.01, ****P* < 0.001 (Student's *t*-test).

Several reports have shown that both IRF8 and FLT3 are crucial for cDC development^{19,20,29,30}. We previously demonstrated that BCR-ABL-mediated suppression of *IRF8* is the cause of cDC deficiency using mouse cells²². To compare the significance of IRF8 downregulation and that of FLT3 downregulation in cDC development in CML, we transduced a bicistronic retrovirus harboring *IRF8* or *FLT3* and human CD8t (hCD8t) into mouse BM lineage-negative cells, together with another bicistronic retrovirus encoding *BCR-ABL1* and green fluorescent protein (GFP). The cells were cultured in the presence of FLT3L (Fig. 3c). Consistent with our previous report, BCR-ABL impaired cDC development, which was restored by exogenous *IRF8* expression. In contrast, exogenous *FLT3* expression did not recover cDC development. Notably, while exogenous IRF8 partially restored *FLT3* expression, exogenous FLT3 did not affect *IRF8* expression (Supplementary Fig. S2c,d). These results suggest that IRF8 is particularly critical as a target of BCR-ABL to disrupt cDC differentiation in CML.

We also analyzed IRF8 protein expression levels in CML HSPCs. Intracellular staining of IRF8 revealed that the proportion of cells with high IRF8 expression levels and the mean IRF8 expression level were diminished in CML HSPCs compared to healthy controls (Fig. 3d). We have previously shown that IRF8 potently suppresses neutrophil production^{31,32}, and in fact, *IRF8*^{-/-} mice develop a CML-like neutrophilia³³. Thus, our results support the notion that BCR-ABL suppresses IRF8 at the hematopoietic progenitor stages not only to impede cDC development, but also to promote neutropenia in CML.

Aberrant gene expression profile of neutrophils in CML patients. Recent reports suggest that tumor-induced myeloid cells, such as granulocytes and monocytes, interfere with anti-tumor immune responses by expressing various immunosuppressive molecules acting against cytotoxic CD8⁺ T cells^{34–36}. Moreover, some reports also show that tumor-infiltrating DCs have defects in their functions, such as antigen presentation³⁷.

To test whether myeloid cells in CML have any altered characteristics, we performed RNA-seq analyses of cDC1s, basophils, monocytes, and neutrophils isolated from PB of CML patients and healthy donors. Pearson's correlation analysis and principal component analysis (PCA) showed that the gene expression profile of remaining cDC1s in CML patients displayed no significant differences compared to cDC1s in healthy donors (Fig. 4a,b). One possible reason may be that *BCR-ABL1* expression is very low in cDC1s (Supplementary Fig. S3a). Indeed, there were no significant differences in gene expression levels of key cDC1 genes such as *IRF8*, *BATF3*, *XCRI1*, and *CLEC9A* between CML patients and healthy donors (Fig. 4c). Basophils and monocytes also showed similar gene expression profiles between CML patients and healthy donors.

In contrast, remarkably different gene expression profiles were noted in CML neutrophils compared to neutrophils from healthy donors (Fig. 4a,b). Gene ontology (GO) analysis of significantly upregulated genes in CML neutrophils indicated that the genes related to the production of ROS were increased (Supplementary Fig. S3b). In addition, gene set enrichment analysis (GSEA) showed that the gene sets related to mitochondrial metabolism, such as oxidative phosphorylation and fatty acid metabolism, were highly expressed in CML neutrophils (Fig. 4d). One interpretation of these data is that ROS production is promoted through the activation of mitochondrial metabolism in CML neutrophils. It has been reported that neutrophils suppress anti-tumor immune responses via ROS generation^{38–41}. Moreover, we found that CML neutrophils highly express granulocytic myeloid-derived suppressor cell (G-MDSC)-related genes such as arginase-1 (*ARG1*), myeloperoxidase (*MPO*), and *S100A8* (Fig. 4e). These results imply that CML neutrophils, which have increased populations, may contribute to compromised anti-tumor immunity.

Monocytes in CML patients and basophils express high levels of PD-L1. When we performed a cluster analysis of the top 30% differentially expressed genes (DEGs) among the control and CML myeloid cell types, we again observed that only neutrophil-related genes were divided into two distinct clusters between healthy control volunteers and CML patients (Fig. 5a and Supplementary Fig. S3c). We noticed that cluster 4, composed of basophil-specific genes, contained *CD274* (*PD-L1*) encoding the immune checkpoint molecule. Although it has been reported that PD-L1 expression is elevated in myeloid cells in CML patients and a mouse CML model^{42,43}, myeloid cell types that express high levels of PD-L1 have yet to be identified. We also examined cell-surface PD-L1 protein expression in various myeloid cell types by flow cytometry. In addition to control and CML basophils, we found that CML monocytes, but not healthy control monocytes, also expressed high levels of PD-L1 (Fig. 5b), possibly via a post-transcriptional mechanism. These data suggest that high expression of PD-L1 on basophils and monocytes (also reported as monocytic-MDSCs), both of which are known to be increased in absolute numbers in CML patients^{13,44}, may also contribute to compromised anti-tumor immunity.

Basophils express genes related to poor prognosis in CML. Recently, several signature genes have been associated with poor prognosis in CML, including *IGFBP2*, *SRSF11*, *BAX*, *CDKN1B*, *BNIP3L*, *FZD7*, *PRSS57*, and *MRPS28*^{45,46}. However, it is unclear which cell types express these genes. By examining expression of these genes in myeloid cell types in both CML patients and healthy controls, we found that most of the genes related to poor prognosis were highly expressed in basophils, especially in CML patients (Fig. 5c). These results support the long-standing clinical finding that basophil counts can indicate poor prognosis in CML.

Discussion

In this study, we analyzed innate immune cells of the myeloid lineage, such as granulocytes, monocytes, and cDCs, as well as their progenitors in CML patients. Our data confirmed increased proportions of granulocytes (i.e., neutrophils and basophils) and reduced proportions of cDCs (i.e., cDC1s and cDC2s) and further revealed that cDC development was restricted from progenitor stages such as GMPs, MDPs, and CDPs in CML patients. Although two key DC development-related genes, *IRF8* and *FLT3*, were found to be strongly suppressed in CML cells, *in vitro* retroviral transduction experiments using mouse HSPCs suggested that IRF8 is particularly

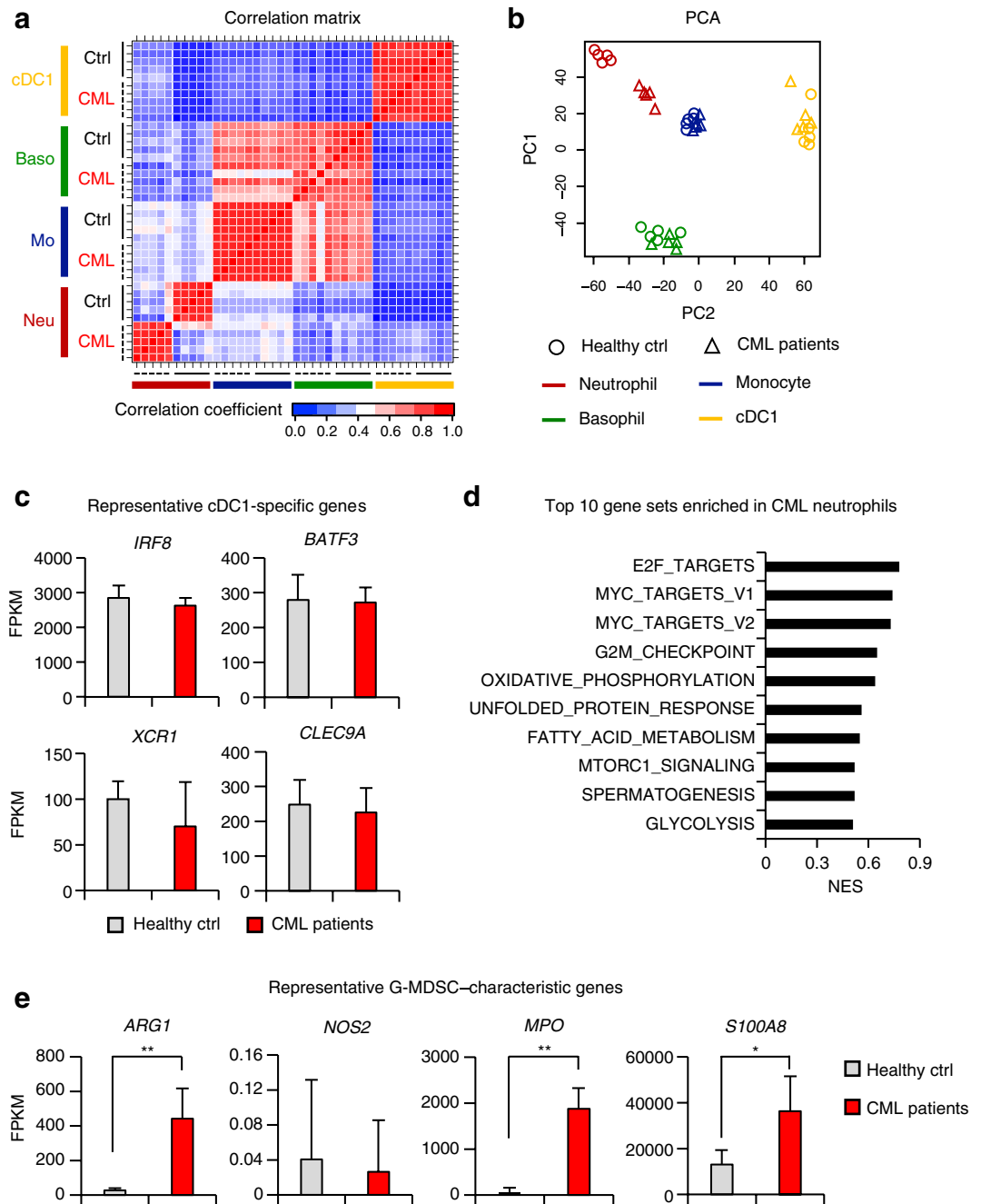


Figure 4. Transcriptomic analysis of myeloid cells in CML patients. **(a)** Pearson's correlation coefficients of RNA-seq data between indicated cell populations (Healthy ctrl [Ctrl], $n = 5$; CML patients [CML], $n = 5$). Neu, neutrophils; Mo, monocytes; Baso, basophils; cDC1, type 1 conventional dendritic cells. **(b)** Principal component analysis (PCA) of RNA-seq data. **(c)** Expression of representative cDC1-specific genes in cDC1s from healthy ctrl and CML patients. **(d)** Normalized enrichment scores (NES) of top 10 gene sets enriched in neutrophils from CML patients compared to those from healthy ctrl identified using gene set enrichment analysis (GSEA). **(e)** Expression of representative G-MDSC-characteristic genes in neutrophils from healthy ctrl and CML patients. Values in **(c)** and **(e)** are the mean \pm SD. * $P < 0.05$, ** $P < 0.01$ (Student's t -test).

critical because exogenous expression of IRF8, but not FLT3, restored cDC differentiation. In addition, our data suggested that there is a hierarchy between the two factors, where IRF8 may function upstream of FLT3, contrary to a previous report⁴⁷. It should be noted, however, that IRF8^{-/-} hematopoietic progenitor cells, such as lymphoid-primed multipotent progenitors (LMPPs) and MDPs, express normal levels of FLT3, indicating that their relationship is cell context-dependent. Given that DCs are essential to provoke CTL responses, these results illustrate how initiation of anti-tumor immune responses is compromised in CML patients.

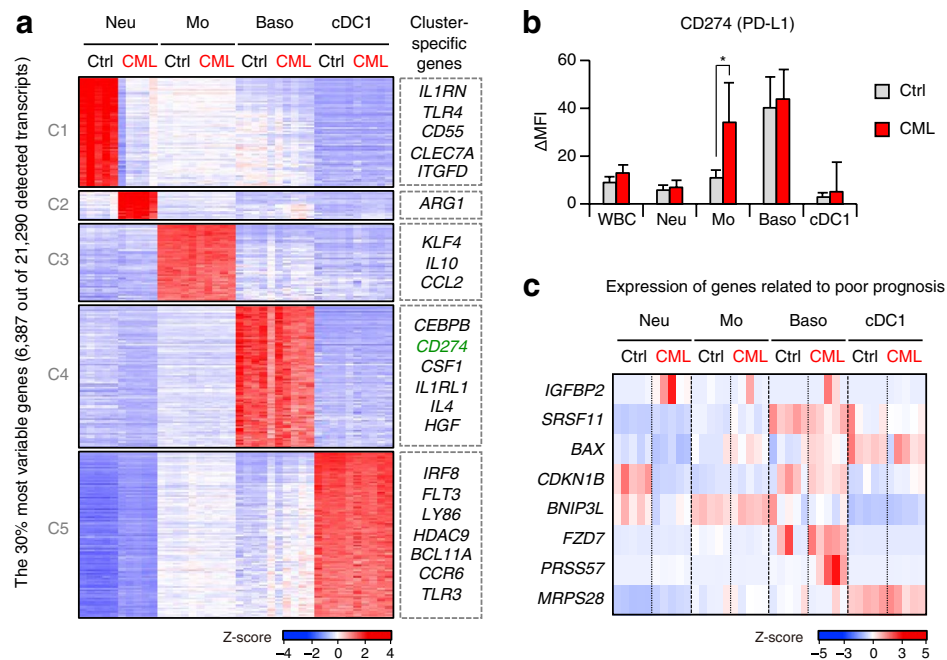


Figure 5. Identification of myeloid cell populations with gene expression patterns that are related to poor prognosis in CML patients. **(a)** Heat map of the top 30% differentially expressed genes among indicated myeloid cell populations from healthy controls [Ctrl] and CML patients [CML]. Gene clusters (1 to 5) were defined according to K-means clustering. Neu, neutrophils; Mo, monocytes; Baso, basophils; cDC1, type 1 conventional dendritic cells. **(b)** Protein expression levels of PD-L1 in myeloid cells of healthy controls [Ctrl] (*n* = 6) and CML patients [CML] (*n* = 14). WBC, while blood cells. Values are the mean ± SD. **P* < 0.05 (Student's *t*-test). **(c)** Heat map showing expression levels of genes related to poor prognosis in indicated myeloid cell populations from healthy controls [Ctrl] and CML patients [CML].

It has been reported that decreased cDC frequency is not restored after treatment with imatinib in CML patients, suggesting that impaired anti-tumor immunity may persist long after TKI treatment¹⁸. We speculate that this may involve an epigenetic mechanism, which accompanies memory, for several reasons: (1) IRF8 epigenetically primes cDC-related genes in mouse LMPPs⁴⁹, (2) IRF8 expression is reduced in HSPCs of a mouse CML model²² and CML patients (this study), and (3) neighboring BCR-ABL⁺ progenitors memorize the influence from BCR-ABL⁺ cells to cause a myeloid bias in CML⁵⁰. Thus, it is tempting to envisage that even after TKI treatment, BCR-ABL⁻ cells might still be unable to efficiently express *IRF8* and generate cDCs.

We found that gene expression profiles in neutrophils are dramatically changed in patients with CML. These neutrophils appeared to augment ROS-producing potential and immunosuppressive features. Moreover, basophils and CML monocytes expressed high levels of the immune checkpoint molecule, PD-L1. Interestingly, PD-L1 expression seems to be highly expressed in both normal and CML basophils at the transcriptional level, whereas it was upregulated only in CML but not in normal monocytes at the post-transcriptional level. Notably, high PD-L1 expression in monocytes has also been reported in non-Philadelphia chromosome myeloproliferative neoplasms with a JAK2 V617F mutation via STAT3/STAT5-dependent transcriptional induction⁵¹. In a mouse CML model, blocking the PD-1/PD-L1 pathway is reportedly an effective treatment for CML^{42,43}. Therefore, high expression of PD-L1 on basophils and monocytes may contribute to suppressing anti-tumor immune responses in CML. Furthermore, we found that basophils, whose increase is known to be one of the risk factors for poor prognosis in CML⁴⁴, have high expression of various genes that have been previously linked with poor prognosis, again implicating basophils in CML pathogenesis.

The increase in basophils in CML patients, despite the inhibition of IRF8 by BCR-ABL, is contrary to the phenotype seen in *IRF8*^{-/-} mice, which display a severe reduction in basophil counts⁵². The discrepancy in these observations may be explained by the activation of STAT5, a target of BCR-ABL^{22,53,54}. It has been shown that STAT5 induces *CEBPA*, which promotes basophil development⁵⁵, while inhibiting *IRF8* expression^{53,54,56}. Thus, we envisage that constitutively activated STAT5 in CML may override the need for IRF8 in basophil development.

In conclusion, our study provides new insights into CML pathogenesis and the basis for developing new therapies for CML involving anti-tumor immunity. Although several clinical trials on immune-activating agents, such as IFN α , an anti PD-1 antibody, and peptide vaccines have been conducted^{57,58}, the effects appear to be limited. One possibility may be that it is not enough to target either an up-regulators or down-regulators of anti-tumor immunity. Further investigation into the mechanism through which BCR-ABL affects immunity would be required in order to develop a method to target both facets—restoring the “accelerator” (i.e., cDCs) and releasing the “brake” (i.e., monocytes, neutrophils, and basophils) of anti-tumor immunity.

Materials and methods

Human samples. Peripheral blood samples and bone marrow samples from newly diagnosed CML patients were obtained after acquiring informed consent at Yokohama City University Hospital, Yokohama City University Medical Center, Kanagawa Cancer Center, or Saiseikai Yokohama South Hospital. Peripheral blood samples from healthy volunteers were obtained after acquiring informed consent. Bone marrow samples from patients who had undergone joint surgery without hematological disorders at the Department of Orthopedics, Yokohama City University Hospital were obtained as normal controls after acquiring informed consent. Sample information is listed in Table 1 [Table 1, Patient characteristics]. We confirmed that the percentages and absolute numbers of each cell population of control individuals in our study are roughly the same as those in previous reports^{48,59,60}. This study was approved by the ethics committee of Yokohama City University (A150723003). All protocols of this study conformed to the standards of Declaration of Helsinki.

Cell isolation. For RNA sequencing (RNA-seq), cDC1s, basophils, monocytes, and neutrophils were immunostained using fluorescently labelled antibodies against cell surface markers and then isolated using a FACS Aria II (BD Biosciences) machine. The purity of the sorted populations was always above 99%. See Supplemental Materials and Methods for the list of antibodies used in this study.

Animals. C57BL/6J mice were bred in specific pathogen-free conditions and used for experiments between 8 and 12 weeks of age. All animal experiments conformed to the ARRIVE guidelines and were conducted in accordance with the Guidelines for the Proper Conduct of Animal Experiments (Science Council of Japan), and all protocols were approved by the institutional review boards of Yokohama City University (protocols #F-A-17-018 and #F-A-20-043).

Published data analysis. Our previously obtained microarray and RNA-seq data of DC progenitors and DC culture were retrieved from the Gene Expression Omnibus (GEO)/National Center for Biotechnology (NCBI) accession numbers GSE5550, GSE44920, GSE84509, and GSE89020^{22,23,28,48}.

Other methods. Detailed information regarding flow cytometry, retroviral transduction, conditions for culturing DCs, cell surface markers and antibodies, quantification of BCR-ABL transcript levels, RNA-seq, bioinformatics analysis, and statistical analysis are available in Supplemental Materials and Methods. RNA-seq data are accessible at the GEO/NCBI database (<http://www.ncbi.nlm.nih.gov/geo/>) with accession number GSE162462²².

Received: 14 April 2021; Accepted: 24 August 2021

Published online: 10 September 2021

References

1. Wong, S. & Witte, O. N. The BCR-ABL story: Bench to bedside and back. *Annu. Rev. Immunol.* **22**, 247–306. <https://doi.org/10.1146/annurev.immunol.22.012703.104753> (2004).
2. Sawyers, C. L. Chronic myeloid leukemia. *N. Engl. J. Med.* **340**, 1330–1340. <https://doi.org/10.1056/nejm199904293401706> (1999).
3. Braun, T. P., Eide, C. A. & Druker, B. J. Response and resistance to BCR-ABL1-targeted therapies. *Cancer Cell* **37**, 530–542. <https://doi.org/10.1016/j.ccell.2020.03.006> (2020).
4. Ross, D. M. & Hughes, T. P. Treatment-free remission in patients with chronic myeloid leukaemia. *Nat. Rev. Clin. Oncol.* **17**, 493–503. <https://doi.org/10.1038/s41571-020-0367-1> (2020).
5. Chen, D. S. & Mellman, I. Oncology meets immunology: The cancer-immunity cycle. *Immunity* **39**, 1–10. <https://doi.org/10.1016/j.immuni.2013.07.012> (2013).
6. Ribas, A. & Wolchok, J. D. Cancer immunotherapy using checkpoint blockade. *Science* **359**, 1350–1355. <https://doi.org/10.1126/science.aar4060> (2018).
7. Sun, C., Mezzadra, R. & Schumacher, T. N. Regulation and function of the PD-L1 checkpoint. *Immunity* **48**, 434–452. <https://doi.org/10.1016/j.immuni.2018.03.014> (2018).
8. McGranahan, N. *et al.* Clonal neoantigens elicit T cell immunoreactivity and sensitivity to immune checkpoint blockade. *Science* **351**, 1463–1469. <https://doi.org/10.1126/science.aaf1490> (2016).
9. Kolb, H. J. *et al.* Donor leukocyte transfusions for treatment of recurrent chronic myelogenous leukemia in marrow transplant patients. *Blood* **76**, 2462–2465 (1990).
10. Kolb, H. J. *et al.* Graft-versus-leukemia effect of donor lymphocyte transfusions in marrow grafted patients. *Blood* **86**, 2041–2050 (1995).
11. Biernacki, M. A. *et al.* Efficacious immune therapy in chronic myelogenous leukemia (CML) recognizes antigens that are expressed on CML progenitor cells. *Cancer Res.* **70**, 906–915. <https://doi.org/10.1158/0008-5472.CAN-09-2303> (2010).
12. Talpaz, M., Hehlmann, R., Quintas-Cardama, A., Mercer, J. & Cortes, J. Re-emergence of interferon-alpha in the treatment of chronic myeloid leukemia. *Leukemia* **27**, 803–812. <https://doi.org/10.1038/leu.2012.313> (2013).
13. Hughes, A. & Yong, A. S. M. Immune effector recovery in chronic myeloid leukemia and treatment-free remission. *Front. Immunol.* **8**, 469. <https://doi.org/10.3389/fimmu.2017.00469> (2017).
14. Rea, D. *et al.* Natural killer-cell counts are associated with molecular relapse-free survival after imatinib discontinuation in chronic myeloid leukemia: The IMMUNOSTIM study. *Haematologica* **102**, 1368–1377. <https://doi.org/10.3324/haematol.2017.165001> (2017).
15. Bruck, O. *et al.* Immune cell contexture in the bone marrow tumor microenvironment impacts therapy response in CML. *Leukemia* **32**, 1643–1656. <https://doi.org/10.1038/s41375-018-0175-0> (2018).
16. Tarafdar, A. & Hopcroft, L. E. CML cells actively evade host immune surveillance through cytokine-mediated downregulation of MHC-II expression. *Blood* **129**, 199–208. <https://doi.org/10.1182/blood-2016-09-742049> (2017).

17. Paquette, R. L. *et al.* Interferon-alpha induces dendritic cell differentiation of CML mononuclear cells in vitro and in vivo. *Leukemia* **16**, 1484–1489. <https://doi.org/10.1038/sj.leu.2402602> (2002).
18. Boissel, N. *et al.* Defective blood dendritic cells in chronic myeloid leukemia correlate with high plasmatic VEGF and are not normalized by imatinib mesylate. *Leukemia* **18**, 1656–1661. <https://doi.org/10.1038/sj.leu.2403474> (2004).
19. Tamura, T., Yanai, H., Savitsky, D. & Taniguchi, T. The IRF family transcription factors in immunity and oncogenesis. *Annu. Rev. Immunol.* **26**, 535–584. <https://doi.org/10.1146/annurev.immunol.26.021607.090400> (2008).
20. Murphy, T. L. *et al.* Transcriptional control of dendritic cell development. *Annu. Rev. Immunol.* **34**, 93–119. <https://doi.org/10.1146/annurev-immunol-032713-120204> (2016).
21. Meyer, M. A. *et al.* Breast and pancreatic cancer interrupt IRF8-dependent dendritic cell development to overcome immune surveillance. *Nat. Commun.* **9**, 1250. <https://doi.org/10.1038/s41467-018-03600-6> (2018).
22. Watanabe, T. *et al.* The transcription factor IRF8 counteracts BCR-ABL to rescue dendritic cell development in chronic myelogenous leukemia. *Cancer Res.* **73**, 6642–6653. <https://doi.org/10.1158/0008-5472.CAN-13-0802> (2013).
23. Kurotaki, D. *et al.* Transcription factor IRF8 governs enhancer landscape dynamics in mononuclear phagocyte progenitors. *Cell Rep.* **22**, 2628–2641. <https://doi.org/10.1016/j.celrep.2018.02.048> (2018).
24. Iwasaki, H. & Akashi, K. Myeloid lineage commitment from the hematopoietic stem cell. *Immunity* **26**, 726–740. <https://doi.org/10.1016/j.immuni.2007.06.004> (2007).
25. Sumide, K. *et al.* A revised road map for the commitment of human cord blood CD34-negative hematopoietic stem cells. *Nat. Commun.* **9**, 2202. <https://doi.org/10.1038/s41467-018-04441-z> (2018).
26. Breton, G., Lee, J., Liu, K. & Nussenzweig, M. C. Defining human dendritic cell progenitors by multiparametric flow cytometry. *Nat. Protoc.* **10**, 1407–1422. <https://doi.org/10.1038/nprot.2015.092> (2015).
27. Cytlak, U. *et al.* Differential IRF8 transcription factor requirement defines two pathways of dendritic cell development in humans. *Immunity* <https://doi.org/10.1016/j.immuni.2020.07.003> (2020).
28. Diaz-Blanco, E. *et al.* Molecular signature of CD34(+) hematopoietic stem and progenitor cells of patients with CML in chronic phase. *Leukemia* **21**, 494–504. <https://doi.org/10.1038/sj.leu.2404549> (2007).
29. Durai, V. *et al.* Altered compensatory cytokine signaling underlies the discrepancy between Flt3(-/-) and Flt3l(-/-) mice. *J. Exp. Med.* **215**, 1417–1435. <https://doi.org/10.1084/jem.20171784> (2018).
30. Onai, N. *et al.* Identification of clonogenic common Flt3+M-CSFR+ plasmacytoid and conventional dendritic cell progenitors in mouse bone marrow. *Nat. Immunol.* **8**, 1207–1216. <https://doi.org/10.1038/nri1518> (2007).
31. Kurotaki, D. *et al.* IRF8 inhibits C/EBPalpha activity to restrain mononuclear phagocyte progenitors from differentiating into neutrophils. *Nat. Commun.* **5**, 4978. <https://doi.org/10.1038/ncomms5978> (2014).
32. Tamura, T., Nagamura-Inoue, T., Shmeltzer, Z., Kuwata, T. & Ozato, K. ICSBP directs bipotential myeloid progenitor cells to differentiate into mature macrophages. *Immunity* **13**, 155–165. [https://doi.org/10.1016/s1074-7613\(00\)00016-9](https://doi.org/10.1016/s1074-7613(00)00016-9) (2000).
33. Holtzschke, T. *et al.* Immunodeficiency and chronic myelogenous leukemia-like syndrome in mice with a targeted mutation of the ICSBP gene. *Cell* **87**, 307–317. [https://doi.org/10.1016/s0092-8674\(00\)81348-3](https://doi.org/10.1016/s0092-8674(00)81348-3) (1996).
34. Gabrilovich, D. I., Ostrand-Rosenberg, S. & Bronte, V. Coordinated regulation of myeloid cells by tumours. *Nat. Rev. Immunol.* **12**, 253–268. <https://doi.org/10.1038/nri3175> (2012).
35. Veglia, F., Perego, M. & Gabrilovich, D. Myeloid-derived suppressor cells coming of age. *Nat. Immunol.* **19**, 108–119. <https://doi.org/10.1038/s41590-017-0022-x> (2018).
36. Engblom, C., Pfirschke, C. & Pittet, M. J. The role of myeloid cells in cancer therapies. *Nat. Rev. Cancer* **16**, 447–462. <https://doi.org/10.1038/nrc.2016.54> (2016).
37. Wculek, S. K. *et al.* Dendritic cells in cancer immunology and immunotherapy. *Nat. Rev. Immunol.* **20**, 7–24. <https://doi.org/10.1038/s41577-019-0210-z> (2020).
38. Jaillon, S. *et al.* Neutrophil diversity and plasticity in tumour progression and therapy. *Nat. Rev. Cancer* <https://doi.org/10.1038/s41568-020-0281-y> (2020).
39. Coffelt, S. B., Wellenstein, M. D. & de Visser, K. E. Neutrophils in cancer: Neutral no more. *Nat. Rev. Cancer* **16**, 431–446. <https://doi.org/10.1038/nrc.2016.52> (2016).
40. Condamine, T. *et al.* Lectin-type oxidized LDL receptor-1 distinguishes population of human polymorphonuclear myeloid-derived suppressor cells in cancer patients. *Sci. Immunol.* **1**, 8943. <https://doi.org/10.1126/sciimmunol.aaf8943> (2016).
41. Rice, C. M. *et al.* Tumour-elicited neutrophils engage mitochondrial metabolism to circumvent nutrient limitations and maintain immune suppression. *Nat. Commun.* **9**, 5099. <https://doi.org/10.1038/s41467-018-07505-2> (2018).
42. Christiansson, L. *et al.* Increased level of myeloid-derived suppressor cells, programmed death receptor ligand 1/programmed death receptor 1, and soluble CD25 in Sokal high risk chronic myeloid leukemia. *PLoS ONE* **8**, e55818. <https://doi.org/10.1371/journal.pone.0055818> (2013).
43. Mumprecht, S., Schürch, C., Schwaller, J., Solenthaler, M. & Ochsenein, A. F. Programmed death 1 signaling on chronic myeloid leukemia-specific T cells results in T-cell exhaustion and disease progression. *Blood* **114**, 1528–1536. <https://doi.org/10.1182/bloodadvances.201600081010.1182/blood-2008-09-179697> (2009).
44. Kantarjian, H. M. *et al.* Chronic myelogenous leukemia: A multivariate analysis of the associations of patient characteristics and therapy with survival. *Blood* **66**, 1326–1335 (1985).
45. Kok, C. H. & Yeung, D. T. Gene expression signature that predicts early molecular response failure in chronic-phase CML patients on frontline imatinib. *Blood Adv.* **3**, 1610–1621. <https://doi.org/10.1182/bloodadvances.2019000195> (2019).
46. Radich, J. P. *et al.* Gene expression changes associated with progression and response in chronic myeloid leukemia. *Proc. Natl. Acad. Sci. U.S.A.* **103**, 2794–2799. <https://doi.org/10.1073/pnas.0510423103> (2006).
47. Chauvistré, H. *et al.* Dendritic cell development requires histone deacetylase activity. *Eur. J. Immunol.* **44**, 2478–2488. <https://doi.org/10.1002/eji.201344150> (2014).
48. Lee, J. *et al.* Lineage specification of human dendritic cells is marked by IRF8 expression in hematopoietic stem cells and multipotent progenitors. *Nat. Immunol.* **18**, 877–888. <https://doi.org/10.1038/ni.3789> (2017).
49. Kurotaki, D. *et al.* Epigenetic control of early dendritic cell lineage specification by the transcription factor IRF8 in mice. *Blood* **133**, 1803–1813. <https://doi.org/10.1182/blood-2018-06-857789> (2019).
50. Welner, R. S. *et al.* Treatment of chronic myelogenous leukemia by blocking cytokine alterations found in normal stem and progenitor cells. *Cancer Cell* **27**, 671–681. <https://doi.org/10.1016/j.ccell.2015.04.004> (2015).
51. Prestipino, A. & Emhardt, A. J. Oncogenic JAK2(V617F) causes PD-L1 expression, mediating immune escape in myeloproliferative neoplasms. *Sci. Transl. Med.* **10**, eaam7229. <https://doi.org/10.1126/scitranslmed.aam7229> (2018).
52. Sasaki, H. *et al.* Transcription factor IRF8 plays a critical role in the development of murine basophils and mast cells. *Blood* **125**, 358–369. <https://doi.org/10.1182/blood-2014-02-557983> (2015).
53. Hjort, E. E., Huang, W., Hu, L. & Eklund, E. A. Bcr-abl regulates Stat5 through Shp2, the interferon consensus sequence binding protein (Icsbp/Irf8), growth arrest specific 2 (Gas2) and calpain. *Oncotarget* **7**, 77635–77650. <https://doi.org/10.18632/oncotarget.12749> (2016).
54. Waight, J. D., Banik, D., Griffiths, E. A., Nemeth, M. J. & Abrams, S. I. Regulation of the interferon regulatory factor-8 (IRF-8) tumor suppressor gene by the signal transducer and activator of transcription 5 (STAT5) transcription factor in chronic myeloid leukemia. *J. Biol. Chem.* **289**, 15642–15652. <https://doi.org/10.1074/jbc.M113.544320> (2014).

55. Qi, X. *et al.* Antagonistic regulation by the transcription factors C/EBP α and MITF specifies basophil and mast cell fates. *Immunity* **39**, 97–110. <https://doi.org/10.1016/j.immuni.2013.06.012> (2013).
56. Esashi, E. *et al.* The signal transducer STAT5 inhibits plasmacytoid dendritic cell development by suppressing transcription factor IRF8. *Immunity* **28**, 509–520. <https://doi.org/10.1016/j.immuni.2008.02.013> (2008).
57. Zitvogel, L., Rusakiewicz, S., Routy, B., Ayyoub, M. & Kroemer, G. Immunological off-target effects of imatinib. *Nat. Rev. Clin. Oncol.* **13**, 431–446. <https://doi.org/10.1038/nrclinonc.2016.41> (2016).
58. Molldrem, J. J. *et al.* Chronic myelogenous leukemia shapes host immunity by selective deletion of high-avidity leukemia-specific T cells. *J. Clin. Investig.* **111**, 639–647. <https://doi.org/10.1172/JCI16398> (2003).
59. Ichihara, K. *et al.* Collaborative derivation of reference intervals for major clinical laboratory tests in Japan. *Ann. Clin. Biochem.* **53**, 347–356. <https://doi.org/10.1177/0004563215608875> (2016).
60. Lundberg, K. *et al.* Allergen-specific immunotherapy alters the frequency, as well as the FcR and CLR expression profiles of human dendritic cell subsets. *PLoS ONE* **11**, e0148838. <https://doi.org/10.1371/journal.pone.0148838> (2015).

Acknowledgements

The authors thank Dr. Daisuke Kurotaki at Yokohama City University for his valuable advice, Dr. Masatoshi Nakazawa, Dr. Masako Kikuchi, Masahiro Yoshinari, and Naofumi Kaneko at Yokohama City University for their help with experiments, and medical doctors at Yokohama City University Hospital, Yokohama City University Medical Center, Saiseikai Yokohama South Hospital, and Kanagawa Cancer Center for providing critical materials. This work was supported by a KAKENHI grants-in-aid (No. 15H04860 to T.T.) from the Japan Society for the Promotion of Science, the Fund for Creation of Innovation Centers for Advanced Interdisciplinary Research Areas Program from the Ministry of Education, Culture, Sports, Science and Technology (to T.T.), a grant from the Uehara Memorial Foundation (to T.T.), and a grant for Strategic Research Promotion from Yokohama City University (to T.T.).

Author contributions

I.H., H.S., and T.T. designed the research; I.H., H.S., A.N., M.I., W.K., and A.N. performed the experiments; I.H., J.N., and K.M. analyzed the data; I.H. and T.T. wrote the manuscript; T.M., K.K., K.M., M.H., T.T., M.T., T.S., S.F., H.F., H.K., and H.N. provided critical materials; T.T. supervised the project; and all authors gave final approval of the manuscript.

Competing interests

The authors declare no competing interests.

Additional information

Supplementary Information The online version contains supplementary material available at <https://doi.org/10.1038/s41598-021-97371-8>.

Correspondence and requests for materials should be addressed to T.T.

Reprints and permissions information is available at www.nature.com/reprints.

Publisher's note Springer Nature remains neutral with regard to jurisdictional claims in published maps and institutional affiliations.



Open Access This article is licensed under a Creative Commons Attribution 4.0 International License, which permits use, sharing, adaptation, distribution and reproduction in any medium or format, as long as you give appropriate credit to the original author(s) and the source, provide a link to the Creative Commons licence, and indicate if changes were made. The images or other third party material in this article are included in the article's Creative Commons licence, unless indicated otherwise in a credit line to the material. If material is not included in the article's Creative Commons licence and your intended use is not permitted by statutory regulation or exceeds the permitted use, you will need to obtain permission directly from the copyright holder. To view a copy of this licence, visit <http://creativecommons.org/licenses/by/4.0/>.

© The Author(s) 2021

論文目録

I 主論文

Compromised anti-tumor-immune features of myeloid cell components in chronic myeloid leukemia patients

Harada, I., Sasaki, H., Murakami, K., Nishiyama, A., Nakabayashi, J., Ichino, M., Miyazaki, T., Kumagai, K., Matsumoto, K., Hagihara, M., Kawase, W., Tachibana, T., Tanaka, M., Saito, T., Kanamori, H., Fujita, H., Fujisawa, S., Nakajima, H. and Tamura, T.

Scientific Reports, 11, 18046 (2021)

II 副論文

なし